

# ***MIRACLES OF THE MODERN WORLD***

Tunnel under the English Channel, CN Tower, Empire State Building, Golden, Gate Bridge. Itaipu Dam, Delta plan, Panama Canal





# AUTHORS:

**COORDINATOR: ILIE NINA  
(ROMANIA)**

**TEAM:**

**1. SESERMAN VETURIA  
(ROMANIA)**

**2. ELENA MITRESCU  
(ROMANIA)**

**3. AUSENDA SILVA  
(PORTUGAL)**

**4. ANNA  
TRYBUCHOWSKA  
(POLAND)**



[https://www.canva.com/design/DAFjkUvGfmo/ITkeqM0-pUSDhxdRDMcpyA/edit?  
utm\\_content=DAFjkUvGfmo&utm\\_campaign=designshare&utm\\_medium=link2&utm\\_source=sharebutton](https://www.canva.com/design/DAFjkUvGfmo/ITkeqM0-pUSDhxdRDMcpyA/edit?utm_content=DAFjkUvGfmo&utm_campaign=designshare&utm_medium=link2&utm_source=sharebutton)

# ***MIRACLES OF THE MODERN WORLD***

*CN Tower*



*Empire State Building*



*Itaipu Dam*



*Panama Canal*



*Delta plan*



<https://www.google.com>

*Tunnel under the English Channel*



*Golden Gate Bridge*



# ***TUNNEL UNDER THE ENGLISH CHANNEL***



Maps can only be  
viewed online

<https://virtualglobetrotting.com/map/english-channel-tunnel-entrance/view/google/>



The **Channel Tunnel** is an undersea railway tunnel, 50.5 km long, of which 37.9 km is under the sea, connecting the west of France with the south-east of England, under the English Channel.

<https://youtu.be/9syZa5XpKfE>

It was recognised as one of the ***“Seven Wonders of the Modern World”*** by the American Society of Civil Engineers, alongside the Empire State Building, the Itaipu Dam in South America, the CN Tower in Toronto, the Panama Canal, the North Sea protection works in the Netherlands, and the Golden Gate Bridge in San Francisco.

It takes around 35 minutes to travel the length of the **Channel Tunnel**.

Eurotunnel from  
France to England  
2017  
(embarking and  
disembarking)



The **Channel Tunnel** is 31.4 miles long, making it the 13th longest tunnel in use (the longest is the Delaware Aqueduct, at 85.1 miles), and the fourth longest used by rail passengers.

The tunnel runs between [Folkestone](#), England, and Sangatte (near [Calais](#)), France, and is used for both [freight](#) and passenger traffic.



***Dashcam Timelapse -  
Traversare tunelul  
Mânecii-de la Calais la  
Folkestone.***

The tunnel was built in cooperation by the governments of the United Kingdom and France.  
It is the third longest railway tunnel in the world, surpassed only by the Japanese Seikan Tunnel and the Gotthard Base Tunnel.



The Channel Tunnel - Puzzle Factory

# CN TOWER

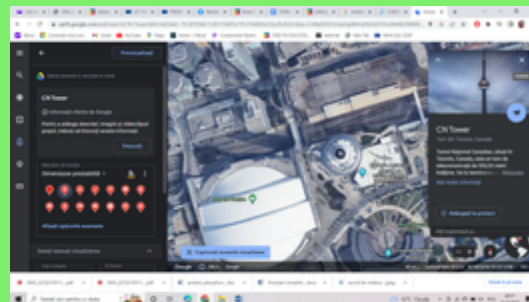


Maps can only be viewed online



The **CN Tower** is the World's Tallest Building and Free-Standing Structure and has the world's highest public observatory.

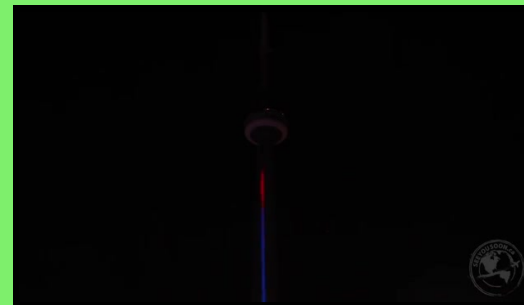
[https://youtu.be/fgbFdV7yL\\_o](https://youtu.be/fgbFdV7yL_o)





At a height of 553.33 m, it is an important telecommunications hub. It is almost twice as tall as the Eiffel Tower and more than three times the height of the Washington Monument.

The **CN Tower** consists of a main hexagonal hollow pillar of concrete containing the elevators.



The Sky Pod is presently the highest observation deck in the world. From here, you can see 100-120 km away, to the city of Rochester across Lake Ontario in the US, and see the mist rising from Niagara Falls.



At the base of the Toronto CN tower is an attraction called the Tour of the Universe. For the price of entry you can walk through a simulated space port, see a laser show and experience what it's like to fly through space.

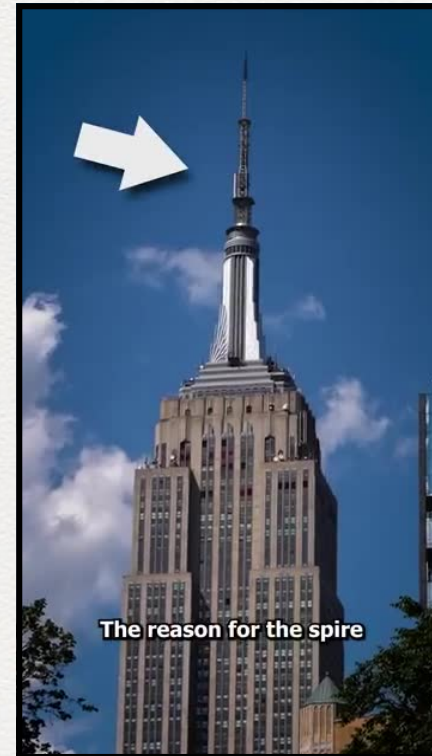
Each year, approximately 2 million people visit the World's Tallest Building to take in the breathtaking view and enjoy all of the attractions the CN Tower has to offer. While at the CN Tower, you'll also have the chance to browse through souvenir shops.

# ***EMPIRE STATE BUILDING***



Maps can only be  
viewed online

**The Empire State Building is a skyscraper and is located at the intersection of Fifth Avenue and West 34 Street. The building was the tallest building in the world for more than 40 years between 1931 and 1972. It was completed in 1931 and it held the top spot until the World Trade Center was built.**



**<https://youtu.be/iRV-XdwRkO4>**



**Intended to be the world's first 100+ story building, construction of the Empire State Building began on March 17, 1930. Construction was completed in a record-breaking 1 year and 45 days. Beautiful inside and out, the Empire State Building is an architectural marvel beloved across the world.**



The building's [Art Deco architecture](#), height, and [observation decks](#) have made it a popular attraction. Around four million tourists from around the world annually visit the building's 86th- and 102nd-floor observatories; an additional indoor observatory on the 80th floor opened in 2019. The Empire State Building is an international [cultural icon](#).

[https://en.wikipedia.org/wiki/Empire\\_State\\_Building](https://en.wikipedia.org/wiki/Empire_State_Building)



EMPIRE STATE BUILDING - Puzzle Factory



THE WONDERS OF THE MODERN WORL - EMPIRE STA...

# GOLDEN GATE BRIDGE

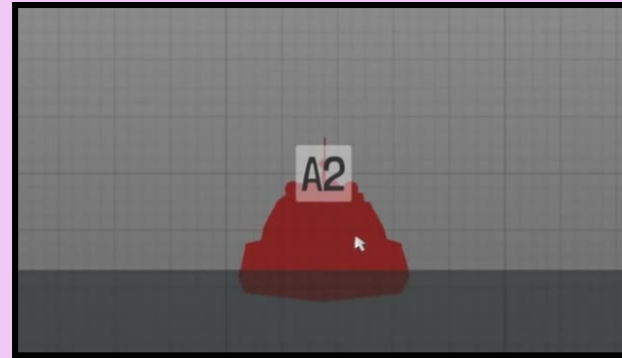


Maps can only be  
viewed online

The Golden Gate Bridge is a [suspension bridge](#) spanning the [Golden Gate](#), the one-mile-wide (1.6 km) [strait](#) connecting [San Francisco Bay](#) and the [Pacific Ocean](#). The structure links the U.S. city of [San Francisco, California](#)—the northern tip of the [San Francisco Peninsula](#)—to [Marin County](#).  
[Wikipedia](#)

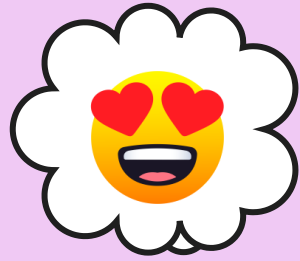


checkmark



**Upon its completion in 1937, it was the tallest and longest suspension bridge in the world. The Golden Gate Bridge came to be recognized as a symbol of the power and progress of the United States, and it set a precedent for suspension-bridge design around the world.**





Golden Gate Bridge - Puzzle Factory



Golden Gate Bridge - Puzzle Factory



# ITAIPU DAM



Maps can only be viewed online



Maps can only be viewed online

**The Itaipu Dam is a hydroelectric dam on the Paraná River located on the border between Brazil and Paraguay. The construction of the dam was first contested by Argentina, but the negotiations and resolution of the dispute ended up setting the basis for Argentine-Brazilian integration later on. [Wikipedia](#)**

The total length of the dam is 7,235 metres





BARAJUL ITAIPU - Puzzle Factory



ITAIPU DAM - THE WONDERS OF THE MODERN WOR - Puzzle Fact...

# DELTA PLAN



Maps can only be  
viewed online



**The Delta Plan - a system of dams, locks and dams in the Netherlands. Consisting of 13 parts, it is the largest flood protection system in the world.**

**THE DELTA PLAN  
WAS DEVELOPED  
PRIOR TO 1953.**



# THE FLOOD OF FEBRUARY 1, 1953 ACCELERATED ITS IMPLEMENTATION



**Work on the Delta system took over 40 years.**



**The official commissioning of the dams took place in October 1986.**



# ***PANAMA CANAL***



Maps can only be  
viewed online



**The Panama Canal connects the Gulf of Panama within the Pacific Ocean with the Caribbean Sea and the Atlantic Ocean. Because of the S-shape of the Isthmus of Panama, the canal leaves from the southeast, from the Pacific end, to the northwest, at the Atlantic end; in order to avoid any confusion, the authorities classified the transit through the canal as north (from the Pacific to the Atlantic) and to the south (from the Atlantic to the Pacific).**

[Wikipedia](#)

# *Panama Canal*



THE CANAL CONSISTS OF TWO ARTIFICIAL LAKES, SEVERAL ARTIFICIAL CHANNELS AND THREE SETS OF LOCKS. ANOTHER ARTIFICIAL LAKE, LAKE ALAJUELA, ACTS AS A RESERVOIR FOR THE CANAL. THE ARRANGEMENT OF THE CANAL, FROM THE POINT OF VIEW OF A SHIP CROSSING IT FROM THE PACIFIC TO THE

GAME



THE WONDERS OF THE MODERN WORLD

**CHALLENGE**

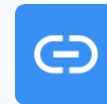
GOOD LUCK!



Golden Gate Bridge - Puzzle Factory



Quizizz — The world's most engaging learning plat...



THE WONDERS OF THE MODERN WORL - EMPIR...

# CHALLENGE



BARAJUL ITAIPU - Puzzle Factory



EMPIRE STATE BUILDING - Puzzle Factory



Golden Gate Bridge - Puzzle Factory



ITAIPU DAM - THE WONDERS OF THE MO...



The Channel Tunnel - Puzzle Factory



**CHALLENGE**

100



THE WONDERS OF THE MODERN WORLD - jigsaw puzzle (30 piec...



THE WONDERS OF THE MODERN WORLD